

# 3

## ***Air Chisels***



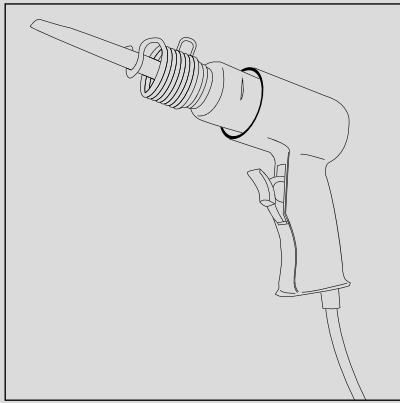
### ***Air Chisel***

Punch Series	124
Scraper	125
Cutter	127
Hammer	131

<i><b>Air Chisel Set</b></i>	132
------------------------------	-----

# AIR CHISEL

## PUNCH SERIES



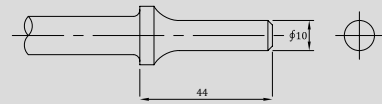
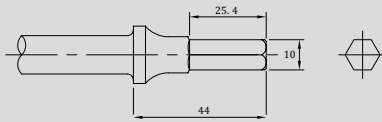
- Tien-I provides two types of shank(0.401" shank and Hex shank)
- Customization of products are at your disposal



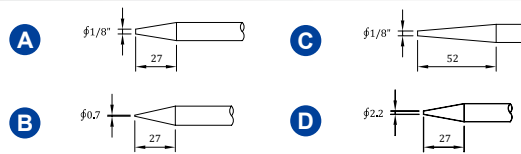
HEX SHANK



0.401" SHANK



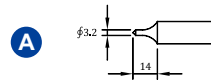
## TAPERED PUNCH



Item No.	Drawing	L(inch)	G
PC120003	A	5"	92
PC165003	A	6-1/2"	143
PC178003	A	7"	137
PC165005	B	6-1/2"	154
PC178004	C	7"	137
PC254003	C	10"	144
PC457003	C	18"	140
PC178006	D	7"	431

>> Drive out pin and rivets

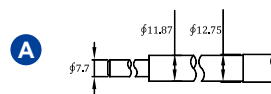
## TRUCK BRAKE RIVET PUNCH



Item No.	Drawing	L(inch)	G
PC152007	A	6"	133

>> Drive out pin and rivets

## GUIDER DRIVER

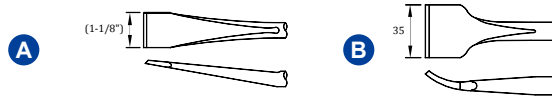


Item No.	Drawing	L(inch)	G
PC152008	A	6"	122

>> Remove and install valve guides

# SCRAPER

## PNEUMATIC ANGLE SCRAPER



Item No.	Drawing	L(inch)	G
PC202101	A	8"	188
PC457101	A	18"	429
PC178102	B	7"	180

>> Remove gaskets,rust, under coating and paint

## WIDE FLAT CHISEL



Item No.	Drawing	L(inch)	G
PC178103-35	A	7"	174
PC178103-40	B	7"	179
PC254103-40	B	10"	268

>> Remove gaskets,rust, under coating and paint

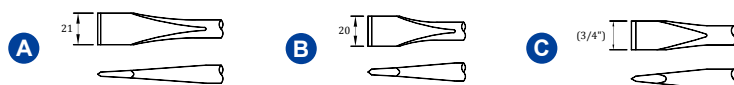
## COLD CHISEL



Item No.	Drawing	L(inch)	G
PC165104-16	B	6-1/2"	150
PC178104-13	A	7"	149
PC202104-16	B	8"	186
PC265104-16	B	10-1/2"	249
PC457104-16	B	18"	434

>> Cut nuts, bolts, exraust brackets and frame members

## FLAT CHISEL



Item No.	Drawing	L(inch)	G
PC120104-21	A	5"	102
PC178104-21	A	7"	164
PC280104-21	A	11"	263
PC457104-21	A	18"	438
PC254104-20	B	10"	237
PC457104-19	C	18"	439

Socket & Wrench

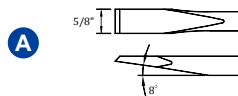
Impact Socket

Air Chisels

Automotive Tools

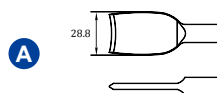
# AIR CHISEL

## SPECIAL COLD CHISEL



Item No.	Drawing	L(inch)	G
PC165105	A	6-1/2"	152
PC178105	A	7"	189

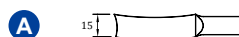
## CUT-OFF & RIPPING TOOL



Item No.	Drawing	L(inch)	G
PC178106	A	7"	159
PC192106	A	7-1/2"	176

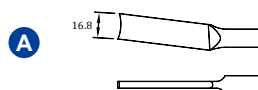
>> For pipe cutting

## MUFFLER SPLITTER



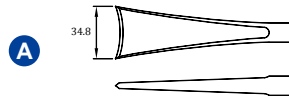
Item No.	Drawing	L(inch)	G
PC178107	A	7"	132

## SPLITTER



Item No.	Drawing	L(inch)	G
PC202107-1	A	8"	157

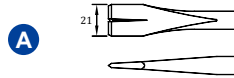
## TAIL PIPE CHISEL



Item No.	Drawing	L(inch)	G
PC192108	<b>A</b>	7-1/2"	180

## CUTTER

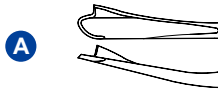
### SPOT WELD CUTTER



Item No.	Drawing	L(inch)	G
PC178201	<b>A</b>	7"	165
PC192201-1	<b>A</b>	7-1/2"	166

>> Cut weld spots

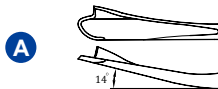
### OUTSIDE MUFFLER CUTTER



Item No.	Drawing	L(inch)	G
PC202207	<b>A</b>	8"	180

>> Concave cutting edge for the outside muffler job

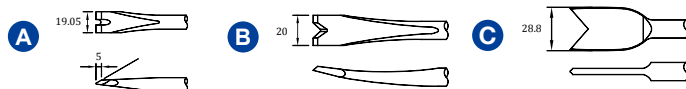
### INSIDE MUFFLER CUTTER



Item No.	Drawing	L(inch)	G
PC202206	<b>A</b>	8"	180

>> Fit inside of muffler

### SPOT WELD CUTTER (BUSTER)



Item No.	Drawing	L(inch)	G
PC152202	<b>A</b>	6"	138
PC178203	<b>B</b>	7"	151
PC192205	<b>C</b>	7-1/2"	160
PC202205	<b>C</b>	8"	178

>> Cut welded spots

Socket & Wrench

Impact Socket

Air Chisels

Automotive Tools

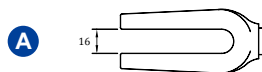
# AIR CHISEL

## SINGLE BLADE PANEL CUTTER



Item No.	Drawing	L(inch)	G
PC120204	A	5"	101
PC178204	A	7"	151
PC152204-1	B	6"	131

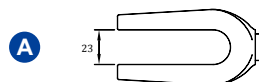
## TIE ROD SEPERATOR



Item No.	Drawing	L(inch)	G
PC178208-16	A	7"	315

>> Seperate ball joints and tie rods

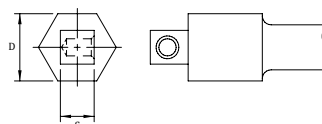
## BALL JOINT SEPERATOR



Item No.	Drawing	L(inch)	G
PC178208-23	A	7"	307

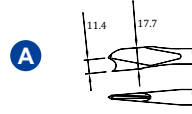
>> Seperate ball joints and tie rods

## 3/8" SOCKET ADAPTOR



Item No.	L	S	D
ADP-3DR	126	3/8" DR	19

## PANEL CUTTER

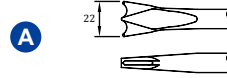


Item No.	Drawing	L(inch)	G
PC165209	A	6"	150

Socket & Wrench

Impact Socket

## DOUBLE CUT BODY CUTTER (RIPPER)

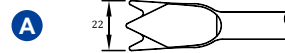


Item No.	Drawing	L(inch)	G
PC152302	A	6-1/2"	147

>> Fast clean edge panel cutter

Air Chisels

## DOUBLE BLADE PANEL CUTTER



Item No.	Drawing	L(inch)	G
PC178303	A	7"	148

Automotive Tools

## DELUX PANEL CUTTER



Item No.	Drawing	L(inch)	G
PC140304-1	A	5-1/2"	132
PC178304	B	7"	160
PC192304	B	7-1/2"	159

>> Slotted for smooth edge panel cutting and ripping

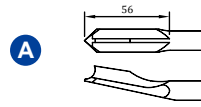
# AIR CHISEL

## SLOTTED PANEL CUTTER



Item No.	Drawing	L(inch)	G
PC152305-1	A	6"	136
PC152305	B	6"	136

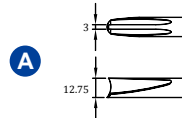
## MUFFLE AND TAIL PIPE REMOVER



Item No.	Drawing	L(inch)	G
PC202306	A	8"	174

>> Milled cutting edge yields better shear and eliminates damage to inner section of muffler

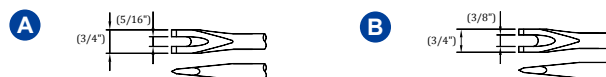
## REMOVING IDLER ARMS AND BUSHINGS



Item No.	Drawing	L(inch)	G
PC165307	A	6-1/2"	142

>> Cut idler arm bushings

## CUTTING 5/16" NUTS



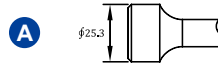
Item No.	Drawing	L(inch)	G
PC152308-8	A	6"	137
PC254308-8	A	10"	234
PC254308-10	B	10"	233
PC457308-10	B	18"	433

>> Remove rusted nuts on shock absorbers and exhaust systems



# HAMMER

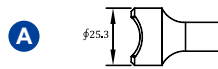
## HAMMER



Item No.	Drawing	L(inch)	G
PC090401	A	3-1/2"	122
PC102401	A	4"	145
PC152401	A	6"	160
PC178401	A	7"	102

>> For body forming on fenders, hoods, and panels against a body dolly.  
Also hammering operations

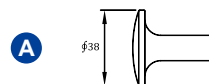
## TIE ROD SLEEVE BREAKER



Item No.	Drawing	L(inch)	G
PC102402	A	4"	122
PC112402	A	4-1/2"	146

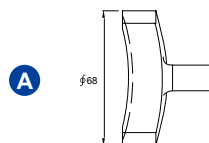
>> Break sleeve rust and corrosion on tie rod work

## HAMMER (DIAMETER BODY SMOOTHER)



Item No.	Drawing	L(inch)	G
PC114403	A	4-1/2"	142

## HAMMER (ARC SMOOTHER)



Item No.	Drawing	L(inch)	G
SC107333	A	4	400

Socket & Wrench

Impact Socket

Air Chisels

Automotive Tools

# AIR CHISEL SET

## 4PC CHISEL KIT



Item No.	4PC-13
BAG	280 x 160 x 16 mm
WEIGHT	580.5 (g)

CONTENT	
5" TAPERED PUNCH	PC120003
5" FLAT CHISEL	PC120104-21
7-1/2" SPOT WELD CUTTER	PC192201-1
7-1/2" DELUX PANEL CUTTER	PC192304



Item No.	4PC-13A
BAG	280 x 160 mm
WEIGHT	636 (g)

CONTENT	
7" TAPERED PUNCH	PC165005
7" COLD CHISEL	PC178104-13
7" SPOT WELD CUTTER	PC178201
7" DELUX PANEL CUTTER	PC178304

## 4PC FRONT END PNEUMATIC HAMMER SET



Item No.	4PC-13C
BAG	197 x 330 mm
WEIGHT	969 (g)

CONTENT	
4" HAMMER	PC102401
7" TAPERED PUNCH	PC165005
7" TIE ROD SEPERATOR	PC178208-16
7" BALL JOINT SEPERATOR	PC178208-23

## 4PC HAMMER ACCESSORY KIT



Item No.	4PC-13D
BAG	165 x 330 mm
WEIGHT	670.5 (g)

CONTENT	
6-1/2" COLD CHISEL	PC165104-16
6" SLOTTED PANEL CUTTER	PC152305
6" POINT TAPPER PUNCH	PC152002
8" MULTI PURPOSE SCRAPER	PC202101

## 6PC CHISEL SET



Item No.	<b>6PC-19</b>
BAG	305 x 228 mm
WEIGHT	1143 (g)

CONTENT	
13/16" FLAT CHISEL(7"L)	PC178104-21
TAILPIPE CUTTER(8"L)	PC202108
MUFFLER CUTTER(8"L)	PC202306
MUFFLER & PIPE CUTTER(8"L)	PC202310
OUTSIDE MUFFLER PIPE CUTTER.(8"L)	PC202207
INSIDE MUFFLER PIPE CUTTER.(8"L)	PC202206

Socket & Wrench

Impact Socket

## 8PC LONG CHISEL KIT



Item No.	<b>8PC-08A</b>
BAG	325 x 300 mm
WEIGHT	1229 (g)

CONTENT	
5" TAPERED PUNCH.	PC120003
5" FLAT CHISEL.	PC120104-21
5" SINGLE BLADE PANEL CUTTER.	PC120204
8" MUFFLER & TAILPIPE REMOVER.	PC202306
7-1/2" RIVET REMOVER.	PC192201-1
7-1/2" CUT-OFF & RIPPING TOOL.	PC192106
7-1/2" SPOT WELD BUSTER.	PC192205
7-1/2" DELUX PANEL CUTTER.	PC192304

Air Chisels

Automotive Tools

## 8PC CHISEL KIT



Item No.	<b>8PC-08B</b>
BAG	325 x 300 mm
WEIGHT	1343 (g)

CONTENT	
MUFFLER REMOVAL TOOL(8"L)	PC202306
CUT OFF & RIPPING TOOL(7"L)	PC178106
TAPERED PUNCH(7"L)	PC178004
COLD CHISEL(7"L)	PC178104-13
SPOT WELD BUSTER(7"L)	PC178201
SINGLE BLADE PANEL CUTTER	PC178204
DELUX PANEL CUTTER	PC178304
WIDE COLD CHISEL	PC178103-40

# AIR CHISEL SET

## 5PC PNEUMATIC SEPERATING FORK SET



Item No.	5PC-78
BLOW CASE	383 x W:272 mm
WEIGHT	5.25 (kg)

CONTENT	
5PC-7" PNEUMATIC SEPERATING FORK	21/32", 15/16", 1-1/8", 1-3/8", 1-11/16"

>> Handle ball joints with minimal shock to the assembly to not damage the vehicle. The separator features a 0.401 parker shank, used to wedge between linkages, knuckles and joints quickly and easily.

## 7PC STEPPED FORK SET



Item No.	7PC-113
BLOW CASE	L:383 x W:272 mm
WEIGHT	4 (kg)

CONTENT	
HANDLE	
PNEUMATIC DRIVER	
STEPPED FORK	11/16", 15/16", 1-1/8", 1-7/16", 1-5/8"

>> Step Design on the forks ease bouncing back.

## 13PC SPECIAL VIBRO CHISEL SET



Item No.	13PC-69A
BLOW CASE	L:383 x W:272 mm
WEIGHT	4 (kg)

CONTENT	
4" U-JOINT AND TIE ROD TOOL	
4"x25mm HAMMER	
4-1/2" DIAMETER BODY SMOOTHER HAMMER	
7"x 5/8" TAPER PUNCH	
7" COLD CHISEL (13/16" TIP)	
7"x15/16" BALL JOINT SEPERATOR	
7"x21/32" TIE ROD SEPERATOR	
5"x1/2"DR. ADAPTOR HAMMER	
5" ADAPTOR SHAFT HAMMER.74mm LARGE FLAT HAMMER	
HAMMER CHISEL	
38mm MEDIUM FLAT HAMMER	
1SET-(10PCS) SPARE O-RINGS	

>> Removes deep rust with vibration. Include pressure plate for adaptor for driving out bearings, sleeves, bushings.

## 18PC AIR CHISEL SET



Item No.	<b>18PC-39-1</b>
TWO SIDE TYPE BLOW CASE	L:425 x W:320 mm
WEIGHT	1.3 (kg)

CONTENT	
COLD CHISEL (5/8" TIP)	PC178104-21
SPOT WELD	PC202108
TAPER PUNCH	PC202306
SLOTTED PANEL CUTTER	PC202310
INSIDE MUFFLER CUTTER	PC202207
OUTSIDE MUFFLER CUTTER	PC202206
TAIL PIPE CHISEL	
RIVET AND BOLT CUTTER (5/8" TIP)	
PNEUMATIC PUNCH (1/2" DIAMETER)	
DOUBLE CUT BODY RIPPER	
PANEL CUTTER	
MUFFLE AND TAILPIPE REMOVER	
COLD CHISEL (5/8" TIP)	
HAMMER	
COLD CHISEL (5/8" TIP)	
MULTI-PURPOSE SCRAPER (1-1/8" TIP)	
PNEUMATIC BALL JOINT WEDGE (0.401" SHANK)	
PNEUMATIC TIE ROD SPREADER (0.401" SHANK)	

Socket & Wrench

Impact Socket

Air Chisels

## 6PC FLAT CHISEL FOR MOTORCYCLE WHEEL SET



Item No.	<b>6PC-116-CD</b>
BLACK BLOW CASE	L:260 x W:160 x H:60 mm
WEIGHT	1.4 (kg)

CONTENT	
4PC-FLAT CHISEL FOR MOTORCYCLE WHEEL	28 x 9.5 mm
	32 x 11.5 mm
	35 x 9.5 mm
	35 x 11.5 mm
FLAT CHISEL FOR AIR HAMMER	9.3 mm (164 L)
	9.7 mm (266 L)

Automotive Tools

## 8PC 3/8"DR. SOCKET ADAPTOR AIR CHISEL WITH WRENCH HANDLE SET



Item No.	<b>8PC-133-LS</b>
BLACK BLOW CASE	L:260 x W:160 x H:60 mm
WEIGHT	1.3 (kg)

CONTENT	
3/8"DR. 6PT SPECIAL DEEP IMPACT SOCKETS	8, 9, 10, 11, 12, 13, 14 mm
3/8"DR. SOCKET ADAPTOR AIR CHISEL WITH WRENCH HANDLE	





# ABOUT TIEN-I



Company Name	Tien-i Industrial Corporation Limited
Established Year	2004
Business Registration Code	80646988
Employee	100
Sales Representative	Candice Jiang   Ginny Lien   Ring Ku   Tannis Huang
Language	English, Mandarin
Country	Taiwan R.O.C.
Address	No. 43, Gongyequ 23rd Rd., Nantun Dist., Taichung City 40850, Taiwan (R.O.C.)
Factory Size	9000 Square Meter

## About Tien-i

In 2004, Larry Lee and Shaio-Pao partnered with 10 industry leaders to found Tien-I, a socket manufacturing firm based in Taichung, Taiwan. Having established a reputation for creating quality tools across the last 15 years, the company has continued to expand its product range and to nurture customer relationships. Presently, Tien-I supplies its global clients with over ten thousand items, including socket tool kits,

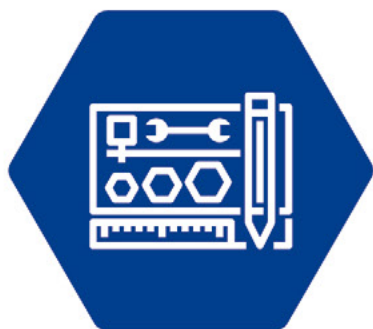
impact sockets, air chisels, tube tools, and automotive tools.

Clients include leading German and American tool brands in the aviation, automobile and solar industries, as well as Japanese machine companies. We consider ourselves more than a supplier—we would like to be your partner in creating an enduring brand.





# WHY TIEN-I



## CUSTOM SOCKET SET

Tien-i Taiwan Excellence Award-winning Team Provide a Variety of Customized Tool Sizes.



## FOR PRO BRANDS

Supply to Fortune 500 Companies. Top Tool Brands Assigned for the Aviation, High-tech Machine Company.



## TRANSPARENT FACTORY

With Secure Score from D&B Financial Report, Pass Intertek Factory Audit Pass, and Provide Trackable Quality Report.

## From Concept to Component

Tien-i's R&D engineering team specializes in manufacturing precision metal parts, especially cold forged and tube components. From the beginning of the design phase, the engineers work with our clients to transform the product concept into a manufacturable component.

Our engineers have the expertise to improve quality, accelerate time to market, and reduce waste. We offer consulting assistance to minimize cost without compromising on performance.



### CUSTOMIZATION

Professional Solution to Various Demands

## Tailored for Your Market

Which tool kit is more successful in your market—the 446pc Master Tools Kit or the 36pc Professional Socket Set?

Decades of experience have shown us that the determining factors are: relevance of contents; and appeal and durability of packaging. With over 20,000 tools in our warehouse, Tien-i wholly customizes the contents of your tool sets. Based on the demands of your local market preference, our team will handpick the ideal selection of tools and packaging.

Exclusive molds are available on request.



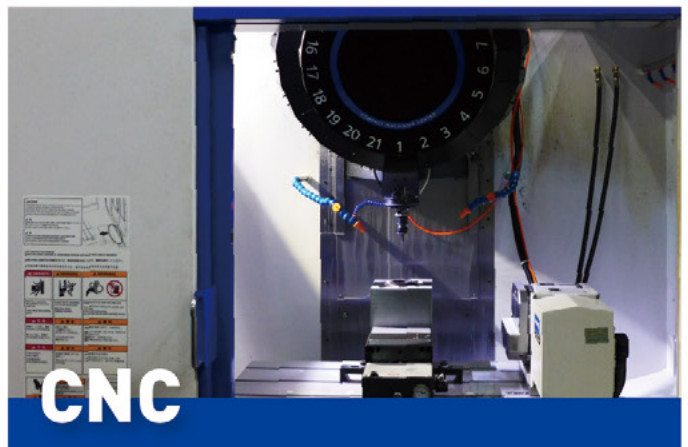
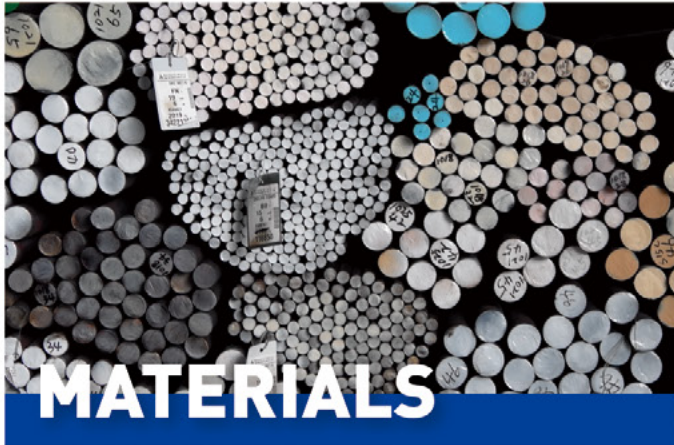
## 100% Made in Taiwan for Pro Brands

In order to swiftly provide the products to companies all over the world, we are continuously increasing our manufacturing capacity in Taiwan. We have heavily invested in the machines

and molds to keep optimizing our production process. Managing our supply chain management via IT and ERP systems enables us to provide our global clients with over 20,000 SKU daily.



## Our Major Processes Include:







# QUALITY AND SAFETY ASSURANCE

To uphold the company's core values of integrity and reliability, Tien-i strives always to provide its clientele with tools of unsurpassed quality and meeting stringent safety standards. We have ISO 9001 and ROHS certification, and

our factories have passed the Intertek Audit. Each member of our quality control team has undergone SGS training to ensure that every Tien-i product satisfies DIN, ISO and ANSI/ASTM international standards.

## Our Certificate



ISO  
9001:2015



Supplier Qualification  
Program



Made in  
Taiwan



Taiwan  
Excellence

## Our Lab Equipment

1. Salt Spary Machine  
Test for Thickness of Plating
2. Torsion Test Machine  
Life-test & Ultimate Torque
3. Hardness Machines  
Test Material's Hardness
4. Optical Projector  
Measure Precise Dimension in  $\mu\text{m}$  Level
5. Measure Specification
6. Complete and Sophisticated Gauges
7. Standard, Key to Quality



天藝工業股份有限公司 Tien-i Industry Co.  
Taiwan Leading Hand-Tool Maker

[www.tien-i.com](http://www.tien-i.com)